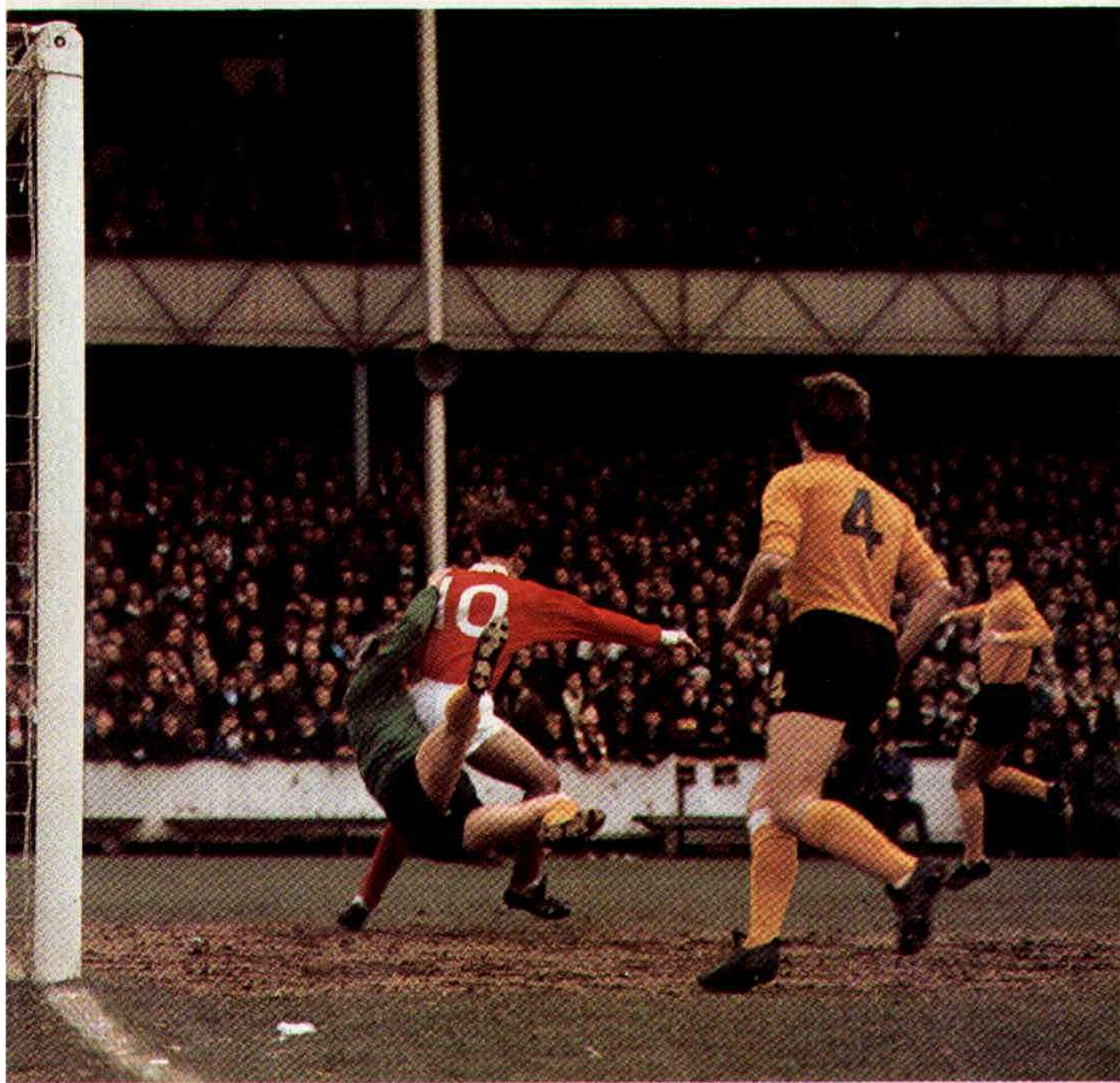


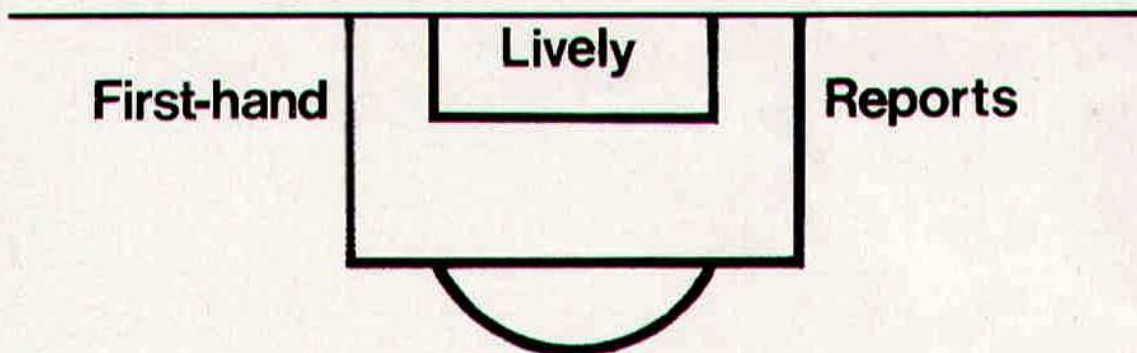
Swindon Town Football Club



Official Programme 5np 1/-



Swindon Town v. Hull City



Complete **Comprehensive** Coverage
Close-up Action **Shots** Every Game
At home or away

The Evening Advertiser
has it covered

McILROYS

**FULLY LICENSED
RESTAURANT**

**FOR THE BEST-VALUE LUNCH IN TOWN
OPEN ALL DAY SATURDAY**

*MORNING COFFEE
LUNCHEON
AFTERNOON TEA
SILVER-GRILL SERVICE*

Private room for meetings, private luncheons and dinners, celebrations

McILROYS · REGENT STREET · SWINDON 5294

Swindon Town Football Company Limited

Registered Office County Ground, Swindon

President W J Castle

Vice-President J Davies

Directors

Chairman H E Lane

Vice-Chairman R Fricker

F L Collings A W Done M Earle C J Green

F Plyer H Williams K H Wilmer and Dr J Nicholas

General Manager R A Morse

Secretary R J Jefferies

Team Manager F Ford



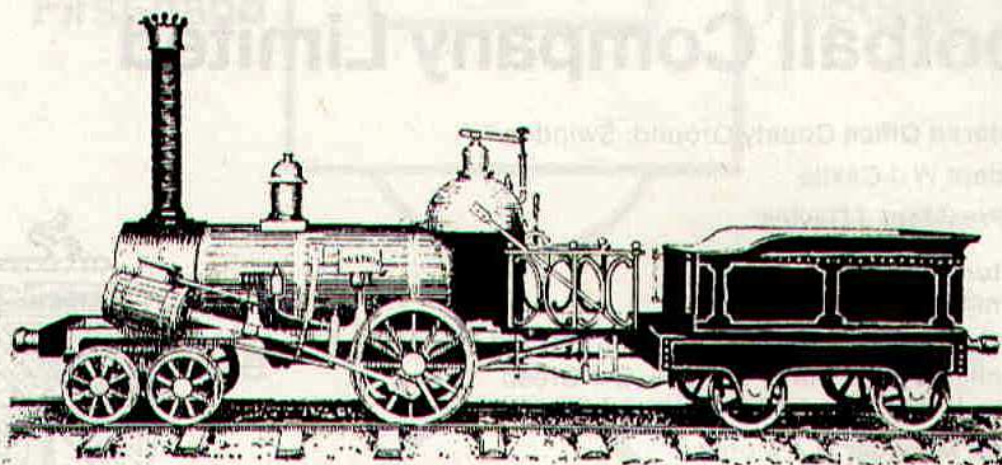
Saturday, 15th August, 1970

Division II

Swindon Town v. Hull City

Kick-off 3 p.m.

Swindon Town	Officials	Hull City
1 Downsborough	REFEREE A W S Jones Aughton, Nr Ormskirk	1 McKechnie
2 Thomas		2 Beardsley
3 Trollope		3 Deavis
4 Butler		4 Wilkinson
5 Burrows		5 Neill
6 Harland		6 Simpkin
7 Smith		7 Lord
8 Smart		8 Chilton
9 Horsfield	LINESMEN	9 Pearson
10 Noble	Red Flag: D G Ball Winchester	10 Wagstaff
11 Rogers	Yellow Flag: J G Davies Swansea	11 Butler
12		12 Jarvis
Colours: (Red and White)		Colours: (Amber and Black)



MADE IN 1843!

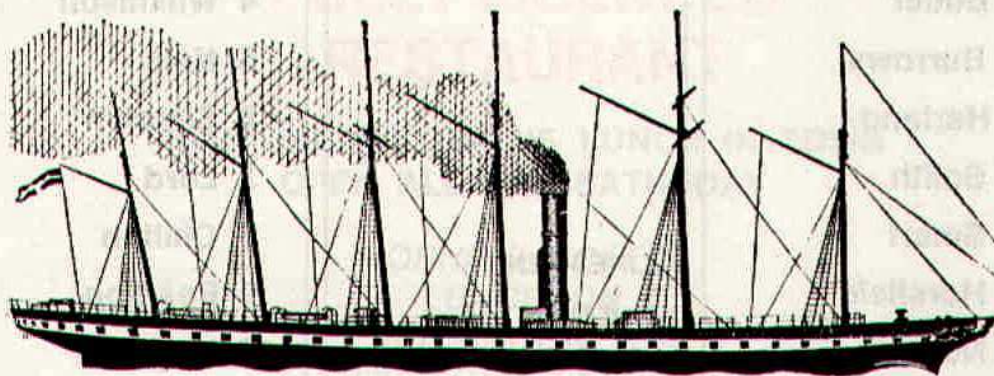
the year that ARKELL'S BREWERY and Swindon's
G.W.R. Works were founded.

ARKELLS THE LOCAL BREW!

Time honoured by 127 years.

*GOOD HONEST BEER
IN*

DELIGHTFUL LICENSED HOUSES



"S.S. GREAT BRITAIN"

built at Bristol in 1843. Designed by the younger Brunel, she was
the first large vessel to be built of iron and the first screw
steamship to cross the Atlantic. Her speed was about 12 knots.

news & views

Again the opening of a new season, with all its hopes and aspirations. From the football news side the close season has been very quiet, with few comings and goings. For Swindon, and especially its officials, the time has been one of great activity. Firstly, the tournament in Italy, culminating in the winning of the Final. Immediately on return came the beginning of the Stand project. At the County Ground at the time of writing one cannot step for workmen, bulldozers, cranes, huge holes, timber and steel. The office has been under tremendous pressure, as the football side — training, season tickets, signings, etc. — must go on.

In the summer of 1958 the erection of what is still called the New Stand, on the Shrivenham Road side, began. Unfortunately, it was far from finished when the season opened. In fact it was not completed until Christmas.

In the first programme of that year I wrote words to this effect. "We apologise most sincerely to the spectators on the Shrivenham Road side of the ground, for the inconvenience caused by the alteration to the banking, and the building of the stand. We trust you will bear with us, and assure you we will do everything possible for your comfort and safety". The "man" on the bank responded nobly. We had almost capacity gates, no incidents, and to my knowledge no complaints. When the job was finished we could most honestly say, "Thank you for your help and kindness".

Now, unfortunately, it is the turn of the Old or North Stand, but this is a much bigger undertaking. Much

of the present stand has to be dismantled to enable the new structure to be built over the existing seats. The Board Room has gone, and the dressing-room ceiling is now only 7ft high, 6ft 2ins in some places. Difficulties are bound to arise regarding entrances and exits (the latter may converge for a time), seating and many encumbrances. To our Season Ticket holders, who occupy the seats in this stand, we do ask "Please be patient". Everything will be done for the comfort of spectators, but no doubt you will have to be prepared for some inconvenience. However, we are quite sure you will be as helpful and co-operative as were our supporters on the other side in 1958. Thank you!

This afternoon we welcome once again to the County Ground, Hull City. Always a strong, fit side, we are sure that today they will provide stern opposition. We welcome especially their new Manager, Mr. Terry Neill, so long such a great stalwart of the famous Arsenal team. A fine player, a great club man, and one whose fitness by his dedication to training was one hundred per cent. No doubt he has made a great impact on the players under his command.

Hull City has certainly made a splendid start, as it was one of the eight clubs chosen to participate in the newly sponsored competition, the Watney Cup, by virtue of scoring the second highest number (72) of goals in Division 2. In the first round they won 4—0 at Peterborough, and in the Semi-Final, after a magnificent game, drew 1—1 with Manchester United after extra time.

Unfortunately they lost on the decision of penalty kicks.

Nevertheless, a great result for the Club, and one which will no doubt give them great confidence this season.

THE GREAT WESTERN HOTEL

(OPPOSITE SWINDON RAILWAY STATION)

The business man's hotel with a top class
steak bar too!

Specialists in
LUNCHEONS and DINNERS
WEDDING PARTIES and RECEPTIONS
good food — quick service

J. ARKELL and SONS LIMITED Telephone SWINDON 22047

Mills and Merricks Limited

16-17 Bridge Street Swindon

Telephone 5365/6

"HOME OR AWAY"

**our function is to ensure that your home is
tastefully and economically furnished**

SWINDON'S COMPLETE HOUSE FURNISHERS

New City Office Supplies Limited

Office and Stationery Suppliers
to Industry and Commerce
6 Commercial Road Swindon
Telephone Swindon (STD Code 0793) 4605



CLARK BROS. (Swindon) LTD

Building and Civil Engineering Contractors

CONSULT US FOR
BUILDING AND CIVIL ENGINEERING
CONSTRUCTION IN ALL ITS PHASES

STRATTON ROAD

SWINDON

Telephone Swindon 27261

Supporters club notes

A warm welcome back to all Swindon Town supporters and, of course, to the team. I include the two new boys, Messrs. Peplow and Gough, and trust that their stay at Swindon's County Ground will be happy and successful.

Now for a few announcements. Assuming that the Anglo-Italian Inter-League Clubs Competition will continue next year, and particularly as Swindon Town are the holders of the Cup, it is hoped to arrange a short holiday in Italy to cover Swindon's away matches. The visit will probably be of about 8 days duration, depending on the fixtures in the competition.

We hope that those who went on the three flights to Italy last season, with more supporters, will support the venture. Please write, as soon as possible, to book a provisional passage, to: The Hon. General Secretary, Swindon Town Football Supporters' Club, Social Club, County Ground, Swindon. Stamped addressed envelope for the reply, please.

To mark the two successful Competitions in Italy last season, two new badges have been designed, one incorporating the Cup of the above Competition, and the other for the English/Italian Cup Winners' Cup Competition. It is hoped that these will be to hand in our Souvenir Kiosk today, but certainly by the next home match.

A special souvenir pennant, incorporating the above two Cups, and the Football League Cup, has also been designed, and should be available today.

The 1970/1 Supporters' Club Handbook is in print, and will be available as soon as received – maybe today also.

Copies of the special programme of the Napoli v. Swindon Town Cup Final in Naples are also available at 1/- each. This is a collector's item, as this is the very first programme ever to have been produced for a football match in Italy.

A newly designed Club tie is on order and will be available by the end of August. In September, Club scarves, in red and white, will also be available.

Social Club members are reminded that membership is now due, and must be renewed on your next visit to the Club. Also, at the A.G.M. this year, the membership of the Supporters' Club was raised to 2/-.

Country members please note, when sending postal orders, with a stamped addressed envelope.

Soccer Who's Who Football Fans' Guide

Answers all the questions football fans want to know. 92 club directory gives advance booking details, how to get there instructions, where to park details, ground facilities and entertainment, and potted history of every club. Obtainable from all newsagents, bookshops and club shops or 8/6 post free from Press Office, Football League, St. Annes, Lancs.

G. A. Streetly

Tobacconist and Confectioner

**10 BOURNE ROAD
MOREDON SWINDON
Telephone 4956**

C. Goodenough and Sons

Removal and Storage Contractors
any distance

**25 Cricklade Street Swindon
Telephone 4555 and 3855**

CECIL GREEN

Artistic Decorations in all its branches

**12 Armstrong Street
Swindon Wilts
Telephone 4593**

W. J. SELWOOD

Telephone Swindon 5884

Saddlery

General Leather Goods Manufactured and
Repaired to Your Individual Requirements

**103 BROAD STREET
SWINDON WILTSHIRE**

Notton's Cafe

COUNTY ROAD

Cliff and Grace Hayward
200 yards from Ground

**Snack and Grill Service
all day**

For High Class
Central Heating, Plumbing
Painting and Decorating
Electrical Installations
and Repairs

NORTH WILTS Sanitary and Heating Co. Ltd.

**NEWPORT STREET SWINDON
Telephone 5373/4**



THE ALCOHOL FUEL

COATE GARAGE

**REPAIRS - OVERHAULS - WELDING
SERVICING - REBORING - TYRES**

Props. E. V. & W. H. Mattick
Marlborough Road Swindon

Leese, Ing & Co. Ltd.

Mineral Water and
Squash Manufacturers

LANSDOWN ROAD SWINDON

Telephone 22744

Maylott Studios

For Group and Sports Photographs

Official Photographer to
Swindon Town Football Club

31 Faringdon Road

Telephone 22792

Always at your service

L. Bibby

For all Types — Rags, Iron and Metal, etc.
Spot Cash Paid. Please Telephone 2101
and our van will call.

**THE PADDOCK ERMIN STREET
STRATTON ST. MARGARET**

our visitors *Hull City*

Malcolm Lord (Utility)

Born in Driffield, near Hull, and signed full-time in July 1965. Another local player who has risen through the Junior and Reserve sides. Now a regular member of the first-team pool.

Alan Jarvis (Half-back)

Joined Hull City from Everton in May 1964. Is a Welsh international representing his country on three occasions. 23 League appearances last season and 143 in his career at Hull City.

Geoff Barker (Half-back)

A local born player, he has progressed through the Junior and Reserve teams and is now in the first-team pool. Made 22 League appearances last season.

Ian McKechnie (Goalkeeper)

Born Bellshill, Glasgow. Joined Hull City in August 1966. Previously with Arsenal and Southend United. Ian completed 42 League matches for the Tigers last season, and has now completed over two full seasons as an ever present in the Hull City side.

Ken Wagstaff (Forward)

Born Langworth. A striker in every sense of the word. Ken has so far notched 126 League goals for the Tigers. He signed for Hull City in November 1964 and in the six seasons at Boothferry Park has played in 227 League games. A danger to every defence he plays against. Last season tied with his colleague Chris Chilton with 18 goals.

Terry Neill (Half-back)

Appointed the Club's Team Player-Manager in June of this year. A Northern Ireland international with 43 caps and captain of the side at 21. Served 11 years with Arsenal also as captain. Now in charge of team matters at Boothferry Park, Terry is a defender of enormous ability and skill.

Ken Houghton (Forward)

Schemer, general, tactician and goal scorer. Hit two fine hat-tricks for the Tigers last season in his 16 goals for the Club, and can always be relied upon to cause the opposition some defensive trouble. Joined the Tigers shortly after his former team mate Ian Butler who was also with Rotherham United. These players have formed a fine understanding together.

Chris Simpkin (Half-back)

A local born player who has really come good, Chris has been a very prominent member of the City team for the last few seasons and has attracted the attention of fans and clubs all over the country with his fine hard grafting displays. Also capable of scoring goals Chris found the net six times last season.

Billy Wilkinson (Mid-field)

Joined the Tigers as an amateur and is now in his sixth season with the Club as a full-time pro. One of the most industrious players of any club, Billy packs tremendous stamina and ability into his game and is known for his never give up approach to the game. Most reliable, very effective and a real trier. 33 team appearances last season and 142 in his career with Hull City.

Paddy Greenwood (Full-back)

Another local born player who came to prominence through the Club's Junior and Reserve teams. Made his team debut in January 1966 and has been a constant member of the first-team squad, making 27 first-team appearances last season.

Tommy Wilson (Half-back)

Signed from Millwall in November 1967. Made his League debut for the Tigers after an hour of signing. Altogether Tom has made 60 League appearances for Hull City.

CARTER BROS. OF SWINDON

Car Radio
Specialists

AND NORTH WILTS RENTALS

Hi-Fi Sales
and Service

FOR THE FINEST IN TELEVISION
To purchase or for rental

Personal and courteous attention : The finest after sales service in Town
One of the few really Private Firms

Staunch supporters of the Town

THE PORK SHOP

(Swindon Bacon Curing Co. Ltd.)

Specialists in

Bacon - Pork - Cooked Ham

50 FLEET STREET SWINDON

Telephone 22122

J. WILMER

Coal Merchants

St. Margaret's Road Swindon

Telephone 22535

SOUTHERN LAUNDRY CO. LTD.

Launderers and Dry Cleaners

HAYDON STREET SWINDON

Telephone 4161

At Your Service

A. E. LUDLOW LIMITED

Wholesale Fruit and Potato Merchant

COLBOURNE STREET
SWINDON WILTSHIRE
Telephone Swindon 3583

We deliver Fresh Fruit, Vegetables
and Potatoes daily—Wholesale Only

BRETTS

PET and GARDEN SUPPLIES

32-33 Commercial Road

and

6 Cromwell Street Swindon

For Paints of Good Quality

H. S. Hodges & Sons

(SWINDON) LTD.

Cricklade Road Swindon

Telephone 22422

Dulux, Brolac, Valspar, Wallicharm, etc.

Borough Press Swindon Limited

Eastcott Hill Swindon telephone 4022

Printers to successful industry

our visitors *continued*

Ray Pettit (Half-back)

Another local youngster who has progressed through the Junior and Reserve teams. Made 21 League appearances last season.

Chris Chilton (Forward)

Another of the Tigers' real goal getters. With Ken Wagstaff has set up a number of goal scoring records for Hull City and formed a twin spearhead which has ripped open many defences. Chris, born in Sproatly, near Hull, joined Hull City as an amateur and his potential was soon realised and he was offered fulltime terms very quickly. Has been Club and team captain for a number of seasons and has a total of 171 goals to his credit, 18 of which were notched last season.

Ian Butler (Winger)

A very versatile and skilful player, a wing forward who has all the ability and know-how to probe open the defences. Makes some dazzling runs on the wing and makes many chances for his colleagues, but also takes them himself when the opportunity arises. Scored 9 goals last season giving him a total for Hull City of 45. Joined Hull City from Rotherham United in January 1965.

Don Beardsley (Full-back)

Born Alyth, Scotland. Signed full-time for the Tigers in October 1964 after serving as an amateur and apprentice with the Club. 27 first-team appearances last season.



An incident from the match against our visitors from Iran.

Fixture list 1970/71

DIVISION II

August

15	Hull City	(H)
19	League Cup (1)	
22	Sheffield United	(A)
29	Sunderland	(H)

September

1	Watford	(H)
5	Blackburn Rovers	(A)
9	League Cup (2)	
12	Portsmouth	(H)
19	Carlisle United	(A)
26	Luton Town	(H)
29	Millwall	(H)

October

3	Charlton Athletic	(A)
7	League Cup (3)	
10	Queen's Park Rangers	(H)
16	Hull City	(A)
21	Norwich City	(A)
24	Middlesbrough	(H)
28	League Cup (4)	
31	Birmingham City	(A)

November

7	Bristol City	(H)
14	Leicester City	(A)
18	League Cup (5)	
21	Oxford United (1)	(A)
28	Sheffield Wednesday	(H)

December

5	Bolton Wanderers	(A)
9	League Cup Semi-Final	
12	Orient (2)	(H)
16	League Cup Semi-Final	
19	Sheffield United	(H)
26	Cardiff City	(A)

1971

January

2	F.A. Cup (3)	
9	Millwall	(A)
16	Norwich City	(H)
23	F.A. Cup (4)	
30	Sheffield Wednesday	(A)

February

6	Bolton Wanderers	(H)
13	Orient (5)	(A)
20	Oxford United	(H)
27	Birmingham City	(H)
	(League Cup Final)	

March

6	Middlesbrough (6)	(A)
13	Leicester City	(H)
20	Bristol City	(A)
27	Blackburn Rovers (S.F.)	(H)

April

3	Sunderland	(A)
9		
10	Cardiff City	(H)
12	Portsmouth	(A)
13	Charlton Athletic	(H)
17	Queen's Park Rangers	(A)
24	Carlisle United	(H)
28	Watford	(A)

May

1	Luton Town	(A)
8	F.A. Cup Final	

FOOTBALL COMBINATION

August

15	Crystal Palace	(A)
19	Norwich City	(A)
22	Bournemouth & B.A.	(H)
25	Chelsea	(H)
29	Ipswich Town	(A)

September

5	Oxford United	(H)
12	Queen's Park Rangers	(A)
15	Cardiff City	(H)
19	Bristol Rovers	(H)
26	West Ham United	(A)

October

3	Crystal Palace	(H)
6	Swansea City	(H)
10	Arsenal	(A)
14	Fulham	(A)
17	Queen's Park Rangers	(H)
24	Gillingham	(A)
31	Birmingham City	(H)

November

7	Bristol City	(A)
14	Leicester City	(H)
21	Fulham	(H)
28	Tottenham Hotspur	(A)

December

5	Plymouth Argyle	(H)
19	Bournemouth & B.A.	(A)
26	Reading	(H)

1971

January

9	Norwich City	(H)
16	Chelsea	(A)
23	Southampton	(A)
30	Tottenham Hotspur	(H)

February

6	Plymouth Argyle	(A)
13	Southampton	(H)
24	Cardiff City	(A)
27	Birmingham City	(A)

March

6	Gillingham	(H)
13	Leicester City	(A)
20	Bristol City	(H)
31	Oxford United	(A)

April

3	Ipswich Town	(H)
7	Reading	(A)
17	Arsenal	(H)
20	Swansea City	(A)
24	Bristol Rovers	(A)

May

1	West Ham United	(H)
---	-----------------	-----	-------

Copyright of The Football League Ltd. and not to be reproduced without permission.

Appearances Goalscorers

DIVISION II SEASON 1969/70

Name	Appearances				Goals	Appearances				Goals
	Division II	League Cup	F.A. Cup	Other Tourns.		Division II	League Cup	F.A. Cup	Other Tourns.	
Downsborough	42	2	4	3		18	0	4	6	
Thomas	41	2	4	7		12	3	1	5	
Trollope	42	2	4	7		9	0	1	2	
Butler	42	2	4	7		5	0	1	0	
Burrows	38	2	4	6		2	0	1	1	
Harland	41	2	4	7		3	0	1	0	
Smith	27 (3)	2	4	7		2	0	1	0	
Smart	42	2	4	7		2	0	0	0	
Horsfield	40	2	4	7		1	0	1	0	
Noble	39	2	4	7		1	0	0	0	
Rogers	36	2	4	7		0	0	0	1	
Jones, C.	9 (9)	0	1 (1)	0 (3)		2	0	0	0	
Penman	1	0 (1)	0	0						
Down	0 (1)	0	0	0						
Jones, R.	0	0	0	4						
Blick	1	0	0	1						
Heath	16 (1)	0	0	0						
Dawson	4	0	0	0						
Dangerfield	1	0	0	0						

(Playing as substitutes in brackets)

FOOTBALL COMBINATION SEASON 1969/70

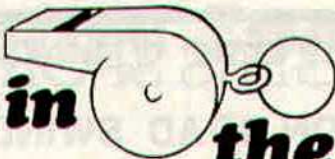
Name	Appearances		Appearances	
	Foot. Comb.	Foot. Comb. Cup	Foot. Comb.	Foot. Comb. Cup
Jones, R.	17	8	0	0
Allen	15	5	0	0
Fry	16	5	0	0
Handrick	24	10	2	0
Blick	22	8	0	0
Claypole	15	5	0	0
Wetson	1	1	0	1
Hubbard	20	7	0	0
Down	18	8	7	3
Bailey	19	9	1	0
Moss	9	3	0	0
Dawson	11	4	0	0
Dangerfield	19	8	14	1
Porter	8	6	4	3
Penman	17	5	2	0
Allen, K.	2	1	0	0
Desmeules	10	4	0	0
Smith	1	1	0	1
Jones, C.	7	4	1	1
Boyd	1	1	0	0
Heath	8	3	0	0
Grzadowski	5	0	0	0
Woodfield	1	1	0	0
Price	1	0	0	0
Dakin	3	0	0	0
Stroud, V.	1	0	0	0
Grubb	1	0	0	0
Stroud, K.	2	0	0	0
Marsh	1	0	0	0
Opponents	0	0	1	0

The Anglo-Italian Inter-League Clubs Competition 1970



**Trophies won by
Swindon Town F.C. in Italy.**



the man in  the middle

Arthur Jones

Started refereeing in 1950 with the Liverpool Boys Association progressing through local Leagues to the Central League and to the Football League line in 1960. He became a Football League Referee in 1963.

Some of the more important matches he has officiated in are France v. Spain in 1960; England v.

West Germany Under 23 International in 1961 and Welsh Youth v. Scottish Youth in 1965. Mr. Jones is married and employed as a buyer. His interests include tennis and gymnastics and he is a past President of the Association of Football League Referees and Linesmen.

**Your team
for Planned Savings**



SAVINGS ACCOUNTS

GOVERNMENT STOCKS

SAVE AS YOU EARN SCHEME

T.S.B. UNIT TRUST

CHEQUE ACCOUNTS

LIFE ASSURANCE LINKED SAVINGS

CASH DISPENSER

CHEQUE CARDS

SERVICE

FOREIGN CURRENCY

STANDING ORDERS

Ask for details at your local T.S.B. Office

TRUSTEE SAVINGS BANK

93 Commercial Road, Swindon

Telephone 23949

DON ROGERS SPORTS

29 FARINGDON ROAD SWINDON

Telephone 27378

Main suppliers to Swindon Town Football Club

Stockists of

**All leading makes of Football Boots and Clothing
Table Tennis, Badminton, Rugby and Hockey equipment**

IN FACT THE COMPLETE SPORTS OUTFITTER

RIMES of SWINDON

POPULAR EXCURSION TO

			Fare	
			adult	child
Saturday, 22nd Aug.	SHEFFIELD UTD.	Dept. 08.00 hrs.	29/-	20/-

SERVICE DIRECT TO THE GROUND
ALL SEATS NUMBERED AND RESERVED

Book now at

102 Commercial Rd., Swindon **46 Cricklade St., Cirencester**
Telephone 27113 Telephone 3479

or with any of Rimes Booking Agents

Dobell Shearman & Co. Ltd.

HIGH STREET, OLD TOWN, SWINDON

Telephone 4961

FANCY and COMMERCIAL STATIONERS
TYPEWRITERS and OFFICE EQUIPMENT

Greetings Cards for all Occasions
from Leading Art Publishers



W. J. CASTLE

Office and Bakery

**4 and 5 MARKET STREET
SWINDON**

Telephone 22017

Specialists—

BIRTHDAY CAKES - WEDDING CAKES

DAIRY CREAM - PASTRIES

BUNS - ROLLS - SPONGES



Personality Spot

..... Peter Downsbrough



A handwritten signature of Peter Downsbrough in black ink. The signature is written in a cursive style and is positioned above a horizontal line.

Born in Halifax. Joined Swindon Town in August 1965 from Halifax Town, where he was a product of local football.
Number of First Team League and Cup appearances: 219.
Height: 5ft. 10½ ins. Weight: 13st. 2lbs. Hobbies: Pigeon Fancier.

HARRY LUNN

(Ex NOTTS COUNTY, PORTSMOUTH and SWINDON TOWN F.C.)

Fish Bar and Restaurant
27-28 COMMERCIAL ROAD SWINDON

RESTAURANT open 9 a.m. to 10 p.m. for

Snacks - Lunches - High Teas - Evening Meal

FISH BAR open Mid-day and Evenings until 11 p.m.

HULFORD MOTORS LIMITED

SELF DRIVE HIRE

Fleet of 1970/69 Fords Escorts De-Luxe
Cortinas De-Luxe Cortinas 1600 Estate
(Bench Seat Column Change) — Zephyr V4s

SHRIVENHAM ROAD

(200 yards from Football Ground)

Telephone 4934

Large Car Park Available

COWLEY BROS. (Wroughton) LTD.

**BUILDERS OF MODERN ATTRACTIVE
HOUSES and BUNGALOWS**

Developments at

SWINDON

WROUGHTON

BADBURY

Office

**28 NEWPORT STREET
SWINDON**

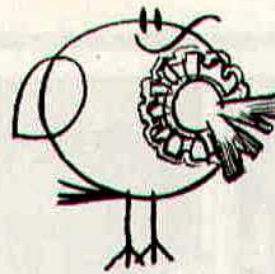
Telephone Swindon 6870

Reserved for British Rail



Inter-City

Golden Goal Competition



Tickets bearing the time in minutes and seconds will be on sale before the game – price **one shilling**
The ticket with the exact time when the **FIRST GOAL** is scored will win

£60

The ticket bearing the time when the **LAST GOAL** is scored will win

£10

The official announcer will be the timekeeper and he will announce the official time of both goals. Should only one goal be scored the winning ticket holder will receive £70. In the event of no goals tickets bearing no score will win £10

A further prize of £10 will also be given for the ticket bearing the number corresponding to the official attendance at the match
Be sure to get your ticket –
Watch for the
GOLDEN GOAL GIRLS!

Forthcoming matches

SATURDAY, 22nd AUGUST, 1970

Football Combination – Kick-off 3 p.m.

Swindon Town v. Bournemouth & B. A.

TUESDAY, 25th AUGUST, 1970

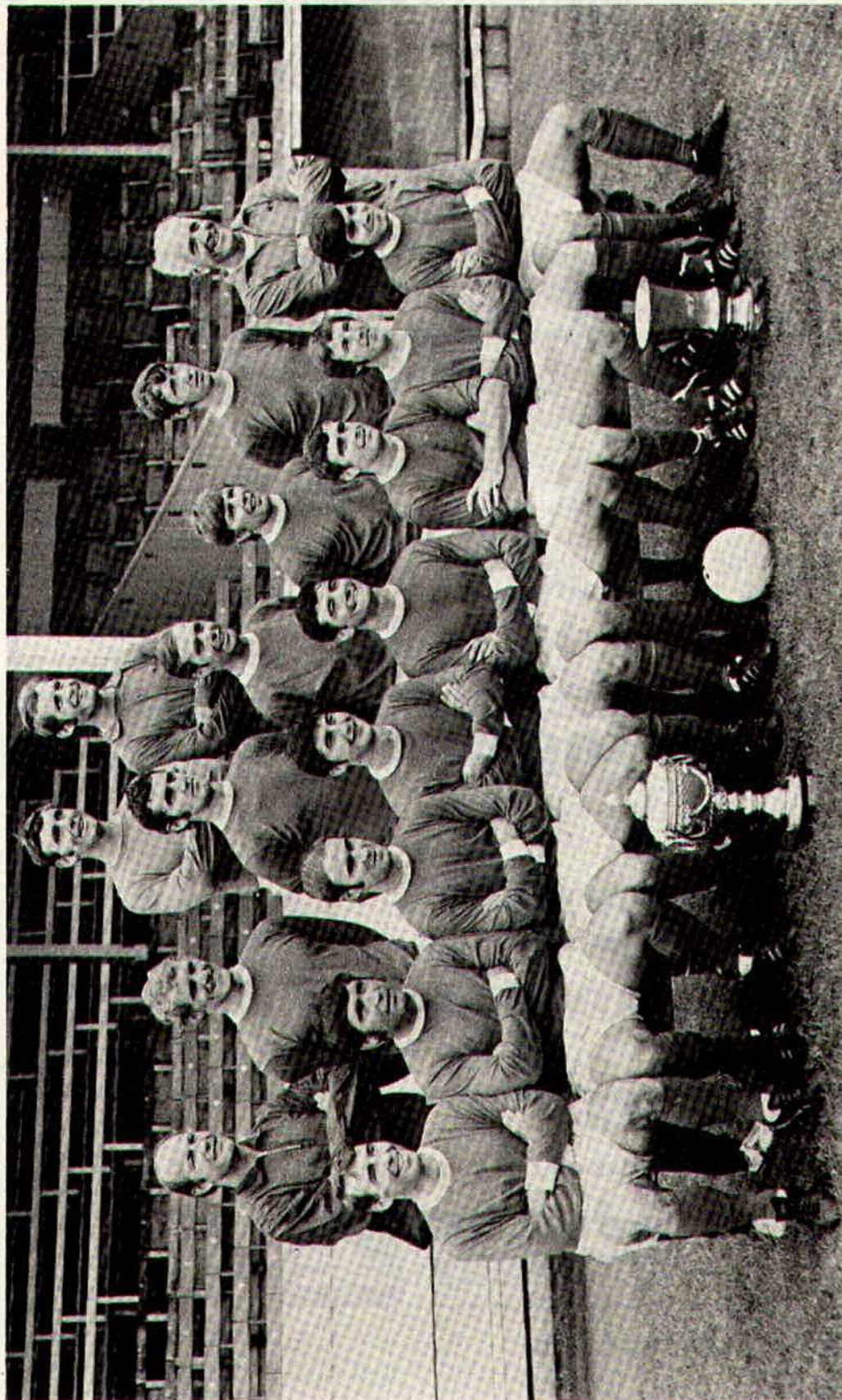
Football Combination – Kick-off 7.30 p.m.

Swindon Town v. Chelsea

SATURDAY, 29th AUGUST, 1970

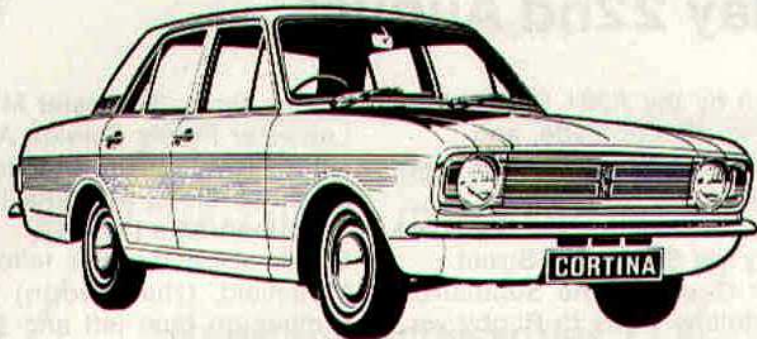
Division II – Kick-off 3.0 p.m.

Swindon Town v. Sunderland



Back row, left to right: P. Downsborough, R. Jones. Centre row: Maurice Owen, J. Trollope, F. Burrows, O. Dawson, J. Butler, R. Thomas, Fred Ford (Team Manager). Front row: T. Gough, J. Smith, P. Noble, A. Horsfield, S. Harland, R. Smart, D. Dangerfield, D. Rogers.

Suppliers to the Swindon Team
MAY WE SUPPLY YOU?



EARLE

of Chippenham Limited

MAIN

FORD

DEALERS

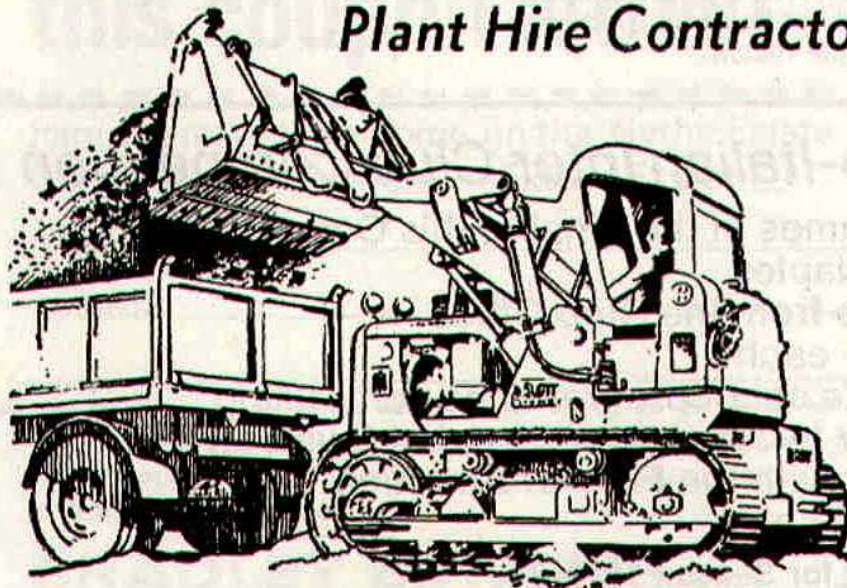
COCKLEBURY ROAD CHIPPENHAM

Telephone 3255

H. HIBBERD LIMITED

FOR YOUR EARTH-MOVING EQUIPMENT

Plant Hire Contractors



40 NEWPORT STREET SWINDON

Telephone Swindon 6125

follow the robins . . .

**to Sheffield United
Saturday 22nd August**



Leave Swindon by the A361 Shrivenham Road via Highworth, Lechlade, and Burford to **Chipping Norton.** **31½ miles**
Continue on A361 via Bloxham to **Banbury.** **44 miles**

Leave Banbury via South Bar Street and North Bar Street on the Southam Road (A423) follow signs to Rugby via Southam, Dunchurch (A426) continue to **Rugby** **69 miles**

Continue on (A426) and leave Rugby via Newbold Road to Gibbet Hill roundabout, after roundabout at junction take A4114 and turn right for the **M1.** **76½ miles**

Follow signs "Leicester M1" until after Leicester Forest Service Area, then signs "Nottingham and North M1". Continue along M1 until Intersection (31) then take the **A57.** **146½ miles**

Continue on the A57 following signs "Sheffield, (Handsworth) A57" at ¾ miles on bear left and ¾ miles further keep right then left. Cross Sheffield ring road. Continue until junction with Granville Road, cross over Queens Road at roundabout, keep left into St. Mary's Road then turn left into **Bramall Lane.** **155½ miles**
Route kindly supplied by R.A.C.

Ticket Sales at Bramall Lane

Front Centre Stand 13/-
Rear Centre Stand 11/-
Front Wing Stands 9/- Rear Wing
Stands 8/- (O.A.Ps. 5/-) Bramall Lane
Stand 9/- Juveniles 5/-
Terrace (covered) 7/- (O.A.Ps. and
Juveniles 4/-)
Ground (partly covered) 6/- (O.A.Ps.
and Juveniles 3/-)
Stand seats are all numbered and
reserved and are bookable 14 days in
advance of the match.

Anglo-Italian Inter Club Competition

Programmes of the Final of this Competition
held in Naples
available from the Club Office
price 1/- each

Complete set of programmes comprising
those for two matches played at Swindon
together with the Final programme
price 1/6 set

F.A. Diary for Season 1970/71

available from the Football Association, 22 Lancaster Gate,
London W.2
Price 6/- each

AKERS GARAGE LIMITED

THE STREET MOREDON SWINDON WILTSHIRE

Telephone Swindon 3457/8

main dealer for
VAUXHALL/BEDFORD
and
Parts and Accessories
Sales and Service

Showrooms open
MONDAY to FRIDAY — 8 a.m. to 8 p.m.
SATURDAY — Closed 7 p.m.
SUNDAYS — 10 a.m. to 2 p.m. for Petrol and Viewing

For a home win fill in this coupon NOW!

I am interested in a home on the Nythe Estate.
Greenmeadow Estate. Eldene Estate.

NAME _____

ADDRESS _____

We are currently building the three Swindon developments indicated on the coupon, together with other housing projects in the counties of Somerset and Dorset.

BRADLEY ESTATES

74 VICTORIA ROAD SWINDON

Tel: 5865



spectator seating in high density polyethylene

- * Supplied to over 40 Football League clubs
- * Any colour. No maintenance
- * Industrial seats for the food, electronics and pharmaceutical industries
- * Largest supplier of spectator and industrial seating in Europe
- * Heavy, medium and light steel fabrication
- * Custom made production line equipment
- * Ancillary work for industry and the building trade

FAST EFFICIENT SERVICE BY



MARTYN LYNSHAW LTD

BOUNDARY WORKS - STRATTON ROAD - SWINDON - WILTS

Telephone: 24231